

ME-1240/ME-1241; Wireless Smart Cart End of Life Battery Removal Instructions

If you need further assistance, please contact Technical Support at support@pasco.com or through www.pasco.com on chat. To access chat through your browser, please enable all cookies on our website.

Battery part numbers referenced below.

Recommended Equipment: (PS-3299; Battery Replacement Tool Set)



Torx T8 Driver



Torx T5 Driver



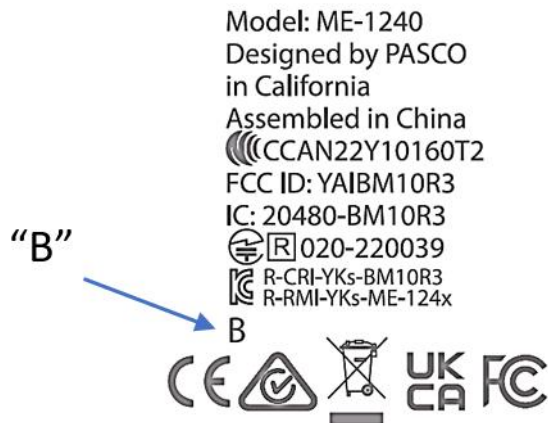
PS-3296



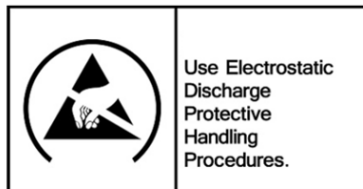
PS-3298 (B version)**

or
Replacement Batteries

**Note: Check the back side of the plastic enclosure of the ME-1240 or ME-1241 you are using. If there is a “B” in the printing as shown below, then the replacement battery model number is PS-3298. If there is no “B” on the printing, the replacement battery is PS-3296.



CAUTION: Failure to use proper ESD protection could result in damage to the electronics.



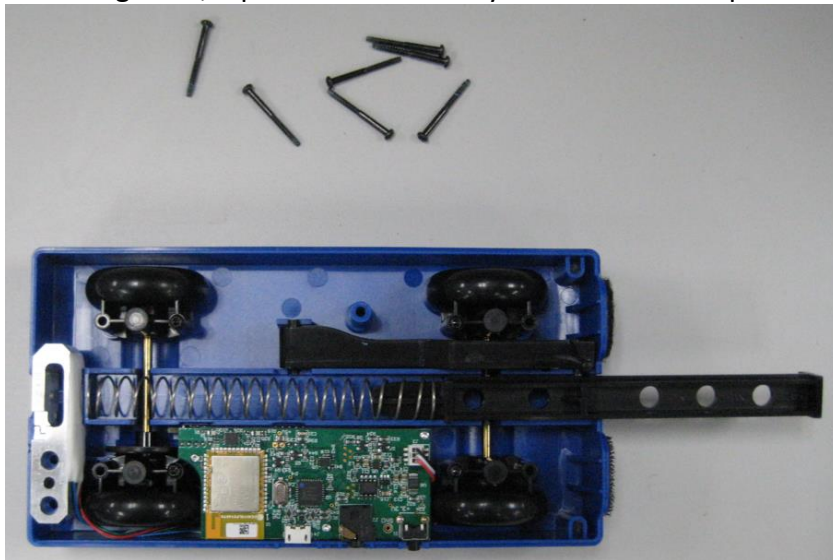
PASCO Form Number	Description	Date		Revision
013-16102	ME-124X Battery Removal Instructions	11-28-22	Page 1 of 4	B

Step 1: Position the Sensor on a surface as shown. Note the location of (7) Torx T8 Screws (circled).



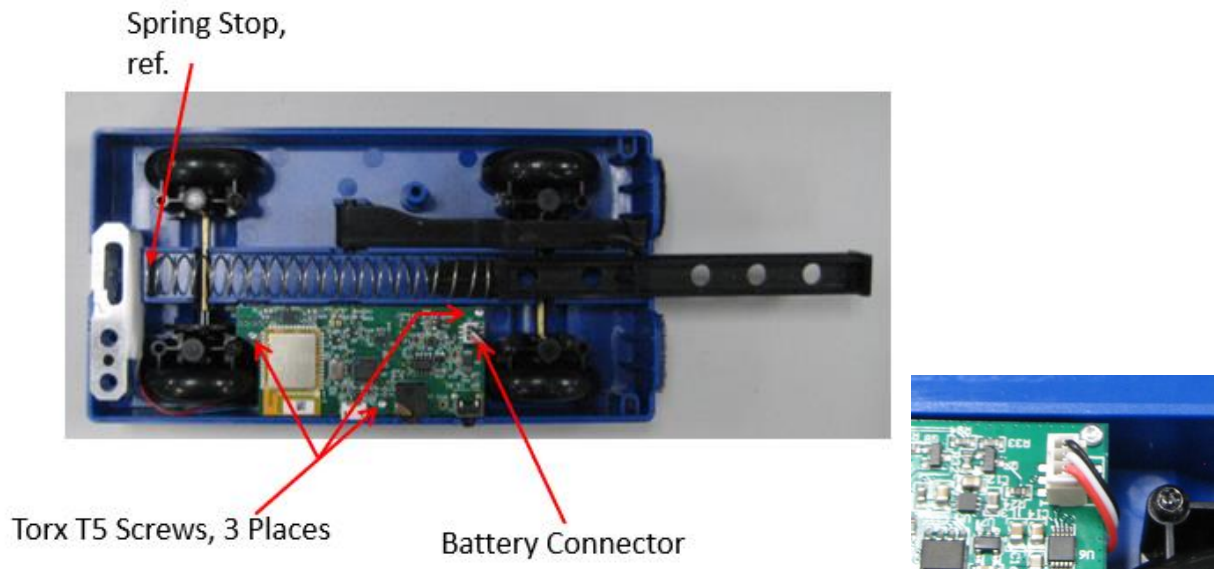
Torx T8 Screw, 7 Places

Step 2: Unscrew and remove the 7 Screws with the T8 Screwdriver. While holding both halves together, flip over the assembly and lift off the top cover.



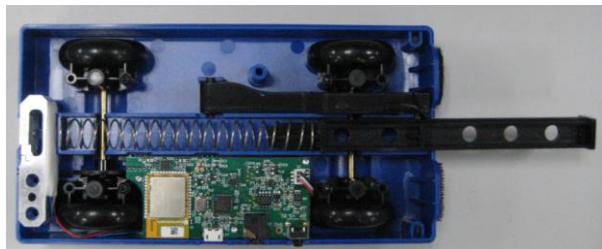
PASCO Form Number	Description	Date		Revision
013-16102	ME-124X Battery Removal Instructions	11-28-22	Page 2 of 4	B

Step 3: Remove the printed circuit board screws (3) with the Torx T5 Screwdriver and lift up slightly. Unplug the battery connector. Remove the battery and dispose of properly. Replace with the new Battery and plug the battery connector to the printed circuit board.



Step 3: Reassembly

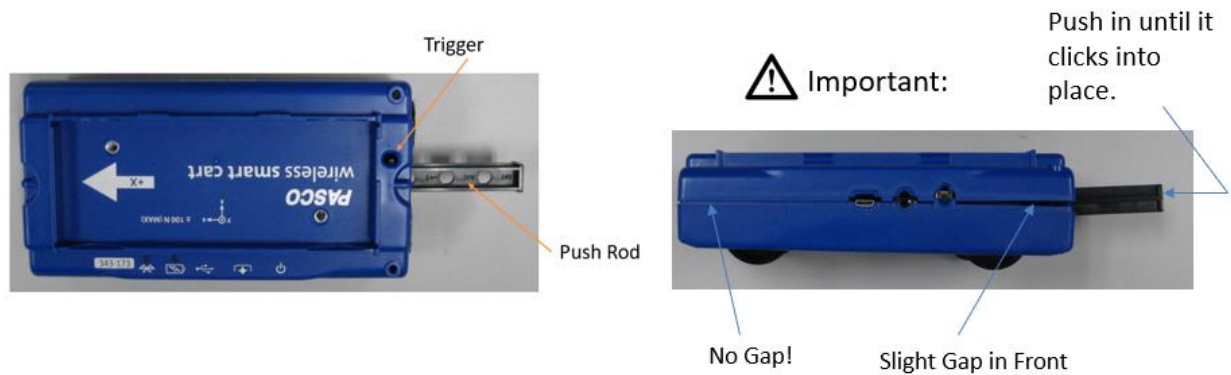
-Reverse the assembly steps to relocate and secure the printed circuit board in place.
-Reposition the Push Rod and Spring. The reassembly should now look as shown below. Make sure that the back end of the spring is inside the spring stop and not pressing against the force beam.



Step 4: Reassembly continued.

-Position the top cover as shown below. Make sure the Trigger is located properly inside the hole. While holding the rear firmly together, lift the front of the top cover up slightly and push the Rod in until it clicks into place. Close the top cover down firmly and push the trigger. The plunger should release. If not, lift off the top cover and repeat these steps.

PASCO Form Number	Description	Date		Revision
013-16102	ME-124X Battery Removal Instructions	11-28-22	Page 3 of 4	B



-While holding both halves together, flip over the assembly and secure the 7 Torx T-8 Screws.

Battery Replacement and Disposal Instructions (Reference):

Batteries contain chemicals that, if released, may affect the environment and human health. Batteries should be collected separately for recycling, and recycled at a local hazardous material disposal location adhering to your country and local government regulations. To find a battery recycling drop-off location, please contact local waste disposal service or the product representative.



The battery or batteries used in PASCO products are marked with the European Union symbol for waste batteries (above) to indicate the need for separate collection and recycling. For small batteries, the symbol is printed on the packaging.

PASCO Form Number	Description	Date		Revision
013-16102	ME-124X Battery Removal Instructions	11-28-22	Page 4 of 4	B