

ME-1247; Smart Cart Motor Replacement Instructions

Battery part number PS-3295; Li-Poly 1000 mAH

Recommended Equipment: (PS-3299; Battery Replacement Tool Set)



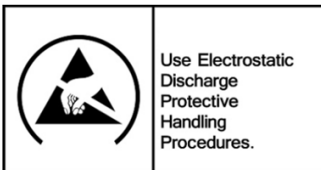
Torx T5 Driver



Replacement Battery



CAUTION: Failure to use proper ESD protection could result in damage to the electronics.



Step 1 Unscrew the thumb screws and set aside.



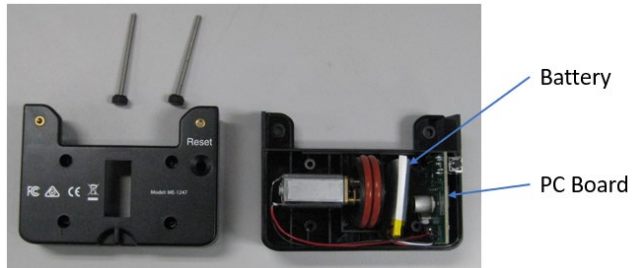
Step 2: Unscrew the 4 Screws (see below) with the Torx T5 Screwdriver. It is OK to leave the screws inside their slots for reassembly.



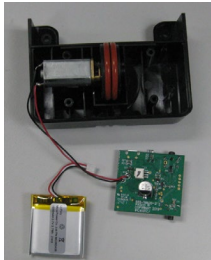
Torx T5 Screw, 4 PLCS

PASCO Form Number	Description	Date		Revision
013-17441	ME-1247 Battery Replacement Instructions	12-07-22	Page 1 of 2	A

Step 3 Lift the top cover off and locate as shown.



Step 4: Remove the battery and PC Board and unplug the battery from its connector. Add the replacement battery by plugging it into the mating connector on the PC Board and reverse the steps noted above to complete the reassembly.



Battery Replacement and Disposal Instructions (Reference):

Batteries contain chemicals that, if released, may affect the environment and human health. Batteries should be collected separately for recycling, and recycled at a local hazardous material disposal location adhering to your country and local government regulations. To find a battery recycling drop-off location, please contact local waste disposal service or the product representative.



The battery or batteries used in PASCO products are marked with the European Union symbol for waste batteries (above) to indicate the need for separate collection and recycling. For small batteries, the symbol is printed on the packaging.

If you need further assistance, please contact Technical Support at support@pasco.com or through www.pasco.com on chat. To access chat through your browser, please enable all cookies on our website.

PASCO Form Number	Description	Date		Revision
013-17441	ME-1247 Battery Replacement Instructions	12-07-22	Page 2 of 2	A