

## ME-1246; Smart Cart Vector Replacement Instructions

Battery part number PS-3295; Li-Poly 1000 mAH

Recommended Equipment: (PS-3299; Battery Replacement Tool Set) Note: Does not contain a mini flat blade screwdriver.



Mini Flat Blade Screwdriver



#0 or #00 Phillips Screwdriver



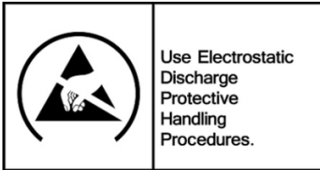
Torx T5 Driver



Replacement Battery



**CAUTION:** Failure to use proper ESD protection could result in damage to the electronics.



**Step 1:** Use a mini flat blade screwdriver to pry off and remove the Qty=4 rubber feet. Place on a non-stick surface for later reassembly.



Rubber Feet 4 PLCS

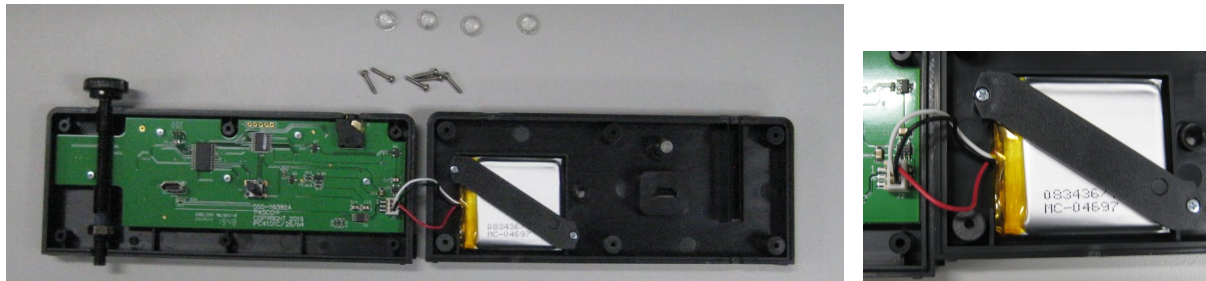
**Step 2:** Unscrew and remove 6 Screws with the Torx T5 Screwdriver.



Torx T5 Screw, 6 PLCS

PASCO Form Number	Description	Date		Revision
013-17440	ME-1246 Battery Replacement Instructions	12-07-22	Page 1 of 3	A

### Step 3 Flip the top cover over to the right as shown.



**Step 4:** Remove the battery strap screws (2) with a Phillips Screwdriver and remove the battery strap. Unplug and remove the battery. Add the replacement battery at the location shown. Plug the battery into its mating connector and reverse the steps noted above to complete the reassembly.



PASCO Form Number	Description	Date		Revision
013-17440	ME-1246 Battery Replacement Instructions	12-07-22	Page 2 of 3	A



## Battery Replacement and Disposal Instructions (Reference):

Batteries contain chemicals that, if released, may affect the environment and human health. Batteries should be collected separately for recycling, and recycled at a local hazardous material disposal location adhering to your country and local government regulations. To find a battery recycling drop-off location, please contact local waste disposal service or the product representative.



The battery or batteries used in PASCO products are marked with the European Union symbol for waste batteries (above) to indicate the need for separate collection and recycling. For small batteries, the symbol is printed on the packaging.

If you need further assistance, please contact Technical Support at [support@pasco.com](mailto:support@pasco.com) or through [www.pasco.com](http://www.pasco.com) on chat. To access chat through your browser, please enable all cookies on our website.

PASCO Form Number	Description	Date		Revision
013-17440	ME-1246 Battery Replacement Instructions	12-07-22	Page 3 of 3	A