

PS-3236; Wireless EKG Sensor Replacement Instructions

Reference: Battery part number 540-115; Li-Poly 300 mAH

Recommended Equipment: (PS-3299; Battery Replacement Tool Set)



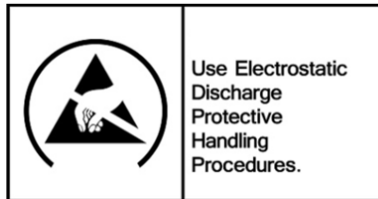
Torx T5 Driver



Replacement Battery



CAUTION: Failure to use proper ESD protection could result in damage to the electronics.



Step 1: Position the Sensor on a surface as shown. Note the location of the (4) T5 Screws.

Qty=4 Torx T5 Screws

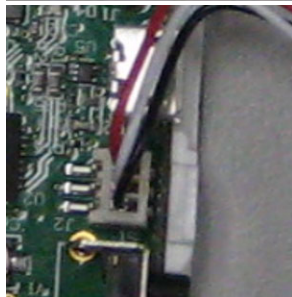
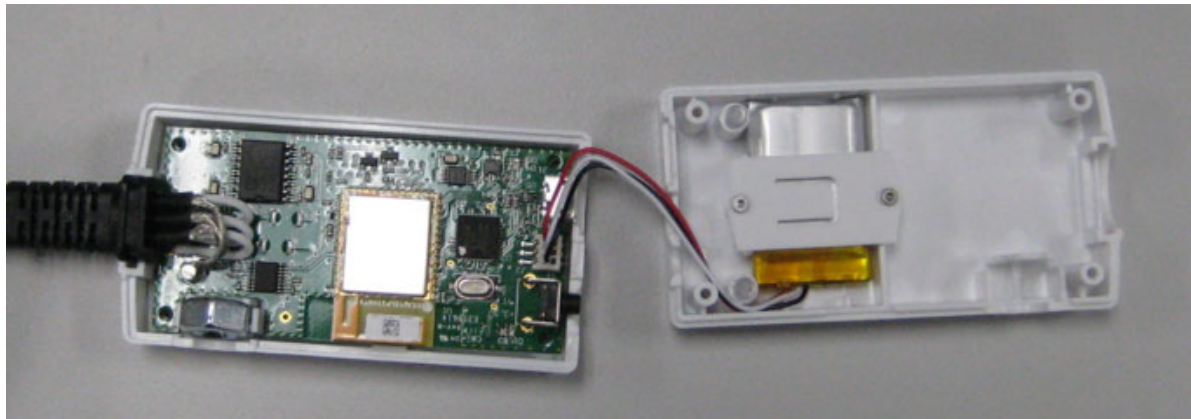


PASCO Form Number	Description	Date		Revision
013-17368	PS-3236 Battery Replacement Instructions	05-05-22	Page 1 of 4	A

Step 2: Unscrew and remove the Qty=4 T5 Screws with the T5 Screwdriver. Flip the assembly over as shown below.

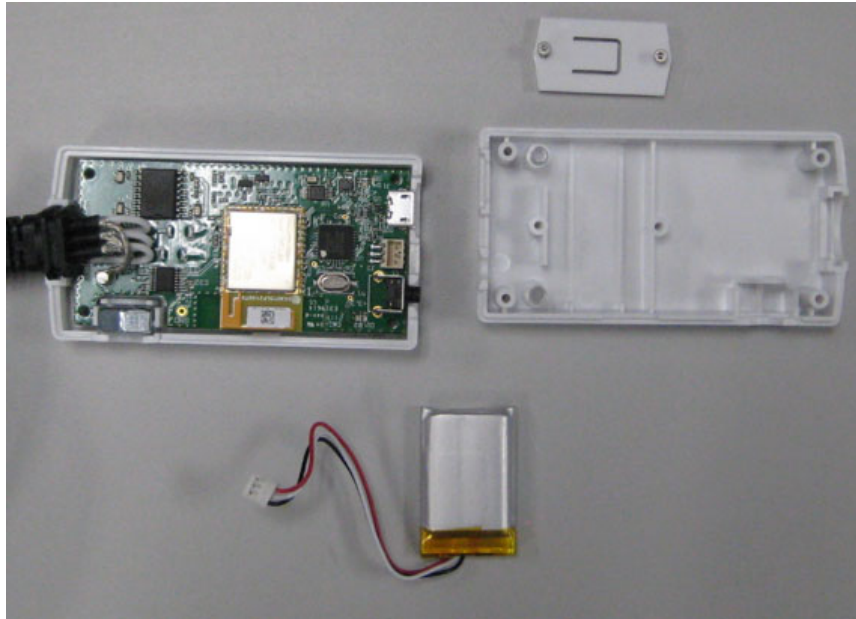


Step 3: Separate the two halves as shown below. Note the connector orientation.



PASCO Form Number	Description	Date		Revision
013-17368	PS-3236 Battery Replacement Instructions	05-05-22	Page 2 of 4	A

Step 4: Remove the battery hold down cover by removing the two T5 screws with a Torx T5 Screwdriver. Unplug the battery connector and set the battery aside.



NEXT PAGE

PASCO Form Number	Description	Date		Revision
013-17368	PS-3236 Battery Replacement Instructions	05-05-22	Page 3 of 4	A

Step 5: Place the new battery in the battery compartment and secure by reattaching the battery hold down cover. Plug in the battery into the battery connector and reverse the steps noted above to complete the reassembly. Dispose of the old battery properly per the instructions below.

Battery Replacement and Disposal Instructions (Reference):



Batteries contain chemicals that, if released, may affect the environment and human health. Batteries should be collected separately for recycling, and recycled at a local hazardous material disposal location adhering to your country and local government regulations. To find a battery recycling drop-off location, please contact local waste disposal service or the product representative.



The battery or batteries used in PASCO products are marked with the European Union symbol for waste batteries (above) to indicate the need for separate collection and recycling. For small batteries, the symbol is printed on the packaging.

If you need further assistance, please contact Technical Support at support@pasco.com or through www.pasco.com on chat. To access chat through your browser, please enable all cookies on our website.

PASCO Form Number	Description	Date		Revision
013-17368	PS-3236 Battery Replacement Instructions	05-05-22	Page 4 of 4	A