

PS-3224: Wireless ODO Battery Replacement Instructions

Reference: Battery part number 540-113; Li-Poly 1000 mAH

Recommended Equipment: (PS-3299; Battery Replacement Tool Set)



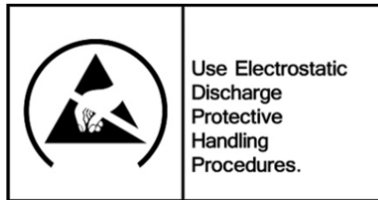
Torx T5 Driver



Replacement Battery



CAUTION: Failure to use proper ESD protection could result in damage to the electronics.



Step 1: Unscrew the top clear plastic top and set aside.



PASCO Form Number	Description	Date		Revision
013-17362	PS-3224 Battery Replacement Instructions	05-05-22	Page 1 of 6	A

Step 2: Locate and remove the Qty=2 Torx T5 Screws.



Qty=2
T-5 Torx Screws

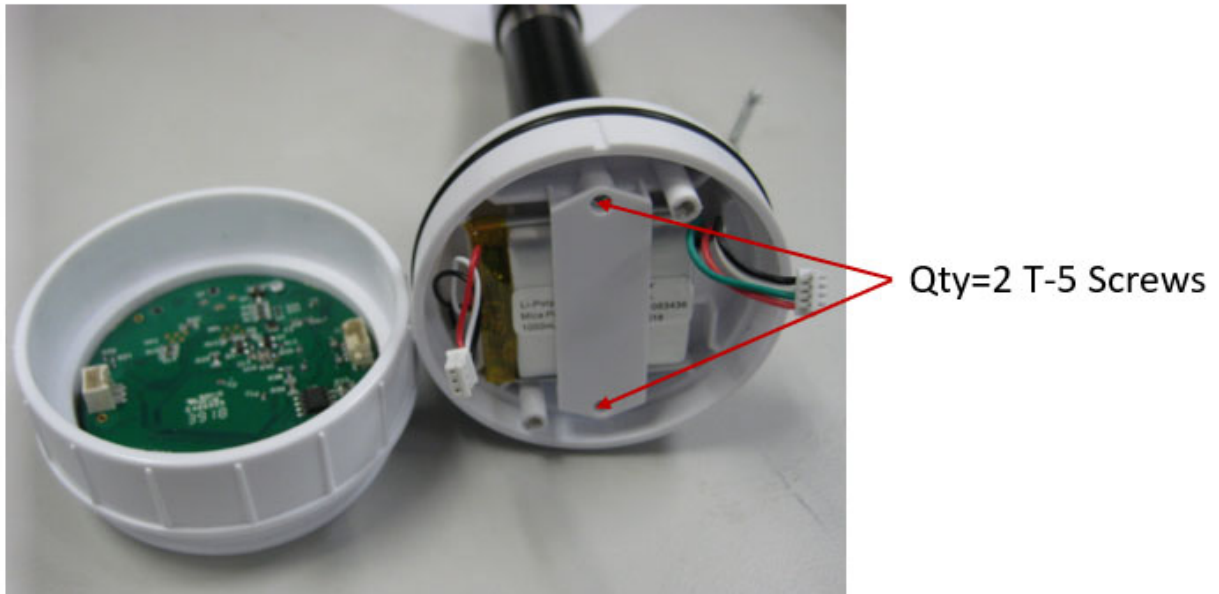


Step 3: While holding the top and the bottom shaft, wiggle the two halves apart as shown.



PASCO Form Number	Description	Date		Revision
013-17362	PS-3224 Battery Replacement Instructions	05-05-22	Page 2 of 6	A

Step 4: Unplug the two connectors to access the battery compartment.



Step 5: Unscrew the qty=2 T5 Torx battery strap screws where shown, and remove the battery strap. Remove the battery and replace with the new battery. Start Reversing the assembly steps per instructions below.



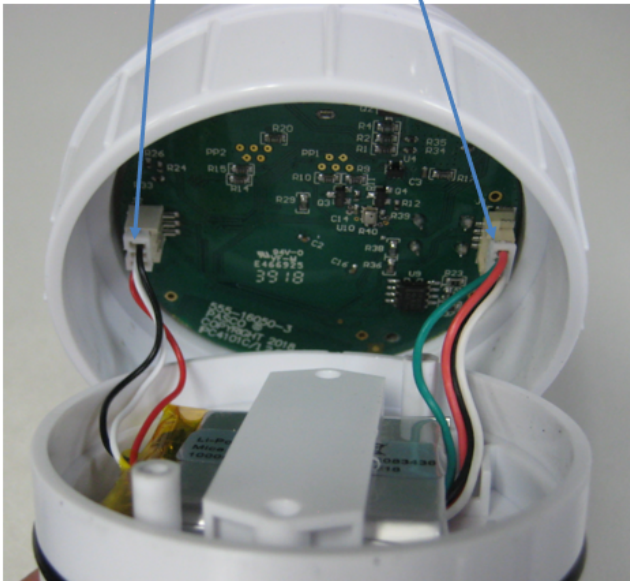
PASCO Form Number	Description	Date		Revision
013-17362	PS-3224 Battery Replacement Instructions	05-05-22	Page 3 of 6	A

Step 6: Secure the battery strap and plug in the connectors as shown.

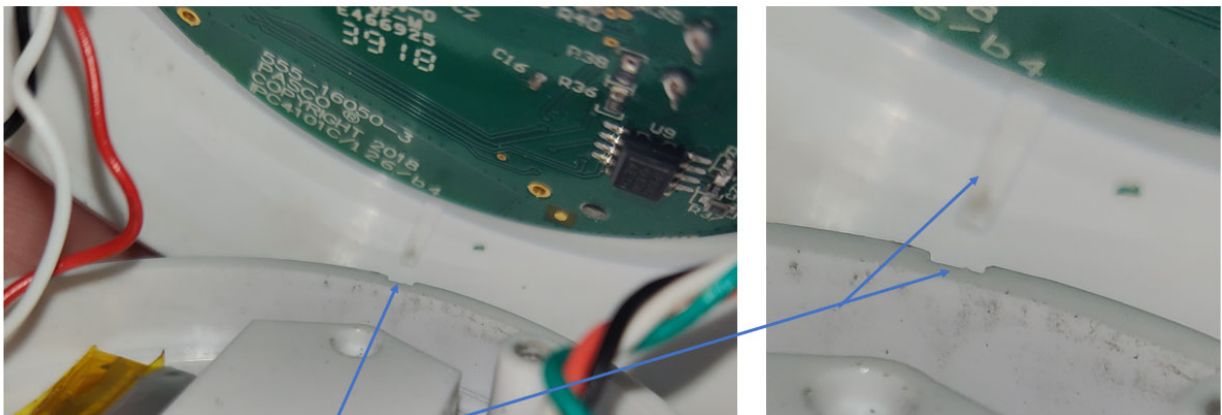
Note connector orientation

Black Wire on top

Red Wire on top



Step 7: The two halves are keyed, and thus, you can visually align the keys and press down firmly to bottom out the assembly and add the mounting screws.

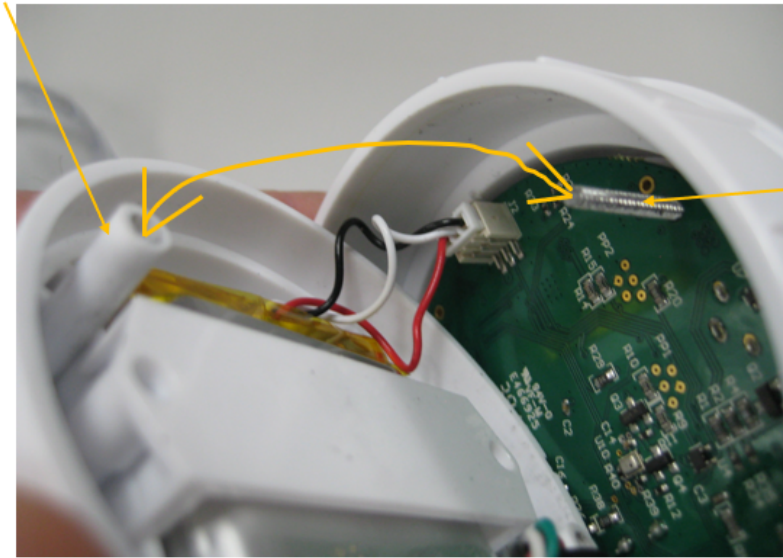


Alignment Keys

PASCO Form Number	Description	Date		Revision
013-17362	PS-3224 Battery Replacement Instructions	05-05-22	Page 4 of 6	A

Step 7b: Alternatively, you can line up the assembly per the below instructions.

Mounting post



- Insert one screw fully through the pc board before reassembly.
- While reassembling, align the screw to the mounting post.
- Once in place, press in and locate the the 2nd screw.
- Use T-5 screwdriver to secure both screws.



Complete

PASCO Form Number	Description	Date		Revision
013-17362	PS-3224 Battery Replacement Instructions	05-05-22	Page 5 of 6	A

Step 8: Screw in the clear plastic top and dispose of the old battery properly per the instructions.



Battery Replacement and Disposal Instructions (Reference):

Batteries contain chemicals that, if released, may affect the environment and human health. Batteries should be collected separately for recycling, and recycled at a local hazardous material disposal location adhering to your country and local government regulations. To find a battery recycling drop-off location, please contact local waste disposal service or the product representative.



The battery or batteries used in PASCO products are marked with the European Union symbol for waste batteries (above) to indicate the need for separate collection and recycling. For small batteries, the symbol is printed on the packaging.

If you need further assistance, please contact Technical Support at support@pasco.com or through www.pasco.com on chat. To access chat through your browser, please enable all cookies on our website.

PASCO Form Number	Description	Date		Revision
013-17362	PS-3224 Battery Replacement Instructions	05-05-22	Page 6 of 6	A