

PS-3218; Wireless Blood Pressure Battery Replacement Instructions

Reference: Battery part number 540-115; Li-Poly 300 mAh

Recommended Equipment: (PS-3299; Battery Replacement Tool Set)



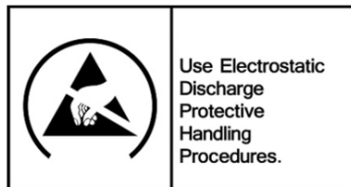
Torx T5 Driver



Replacement Battery



CAUTION: Failure to use proper ESD protection could result in damage to the electronics.



Step 1: Position the Sensor on a surface as shown. Note the location of the (4) Torx T5 Screws.

Qty=4 T5 Torx Screws

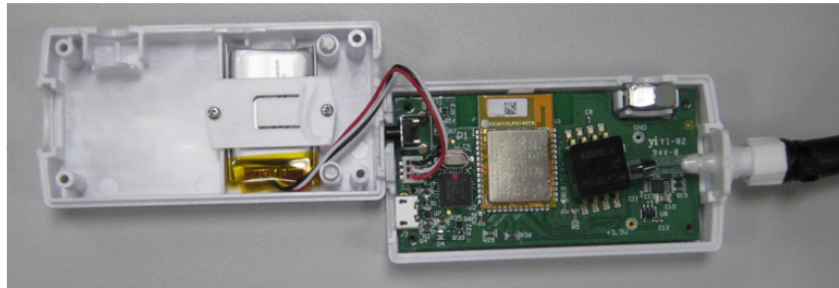


Step 2: Unscrew and remove the Qty= 4 T5 Screws with the T5 Screwdriver and flip the Sensor over as shown below.

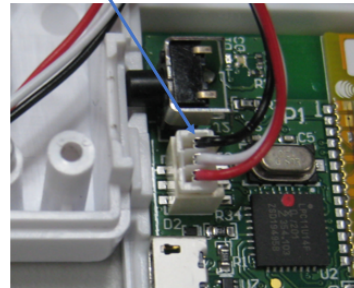


PASCO Form Number	Description	Date		Revision
013-17358	PS-3218 Battery Replacement Instructions	05-05-22	Page 1 of 3	A

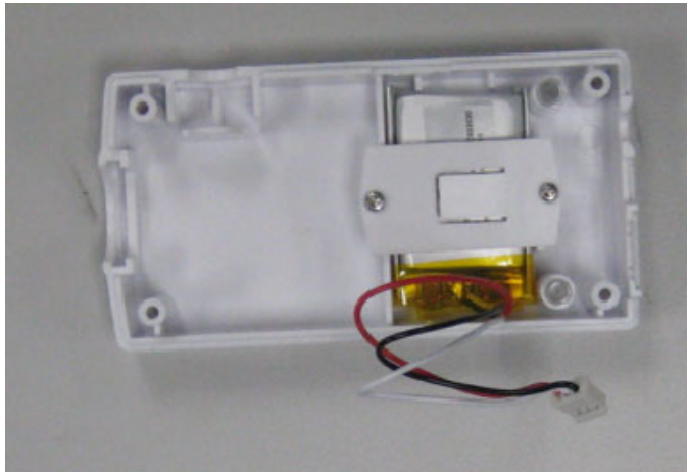
Step 3: Lift and rotate the top cover as shown.



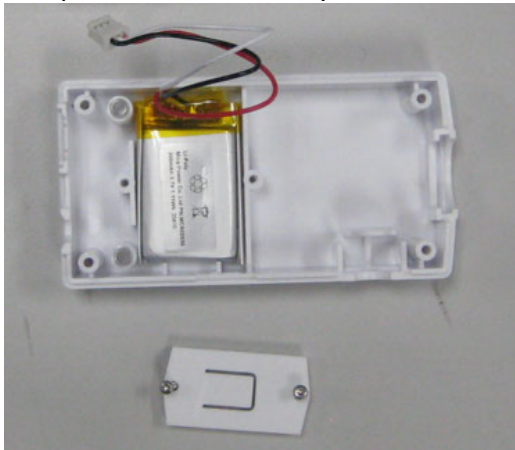
Battery connector



Step 4: Unplug the battery connector.

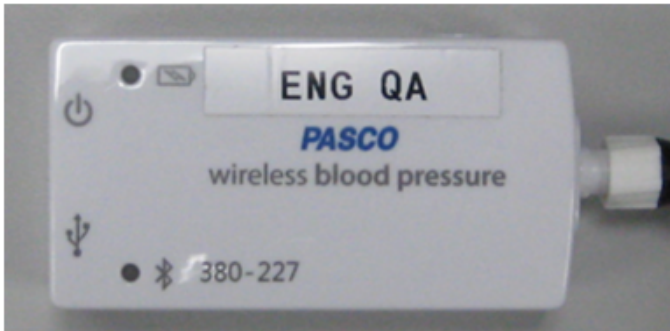


Step 5: Remove the battery strap screws (2) with the T5 Screwdriver and remove the battery strap. Remove the battery and add the replacement battery at the location shown (see above picture). Plug the battery into its mating connector and reverse the steps noted above to complete the reassembly.



PASCO Form Number	Description	Date	Page	Revision
013-17358	PS-3218 Battery Replacement Instructions	05-05-22	Page 2 of 3	A

Step 6: Complete the reassembly and dispose of the old battery properly per the instructions.



Battery Replacement and Disposal Instructions (Reference):

Batteries contain chemicals that, if released, may affect the environment and human health. Batteries should be collected separately for recycling, and recycled at a local hazardous material disposal location adhering to your country and local government regulations. To find a battery recycling drop-off location, please contact local waste disposal service or the product representative.



The battery or batteries used in PASCO products are marked with the European Union symbol for waste batteries (above) to indicate the need for separate collection and recycling. For small batteries, the symbol is printed on the packaging.

If you need further assistance, please contact Technical Support at support@pasco.com or through www.pasco.com on chat. To access chat through your browser, please enable all cookies on our website.

PASCO Form Number	Description	Date		Revision
013-17358	PS-3218 Battery Replacement Instructions	05-05-22	Page 3 of 3	A