

PS-3217; Wireless O2 Sensor Battery Replacement Instructions

Reference: Battery part number 540-113; Li-Poly 1000 mAH

Recommended Equipment: (PS-3299; Battery Replacement Tool Set)



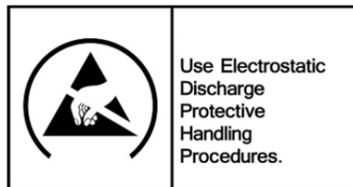
Torx T5 Driver



Replacement Battery



CAUTION: Failure to use proper ESD protection could result in damage to the electronics.



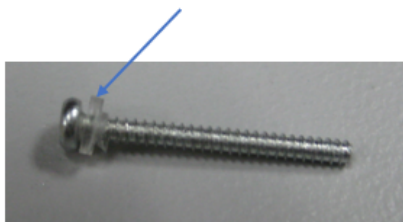
Step 1: Position the Sensor on a surface as shown. Note the location of the (4) Torx T5 Screws. Remove the 4 screws with the Torx T5 Screwdriver.

Qty=4 T5 Screws



Caution: Each screw has a small plastic washer. Please make sure the washers do not come off the screws.

washer

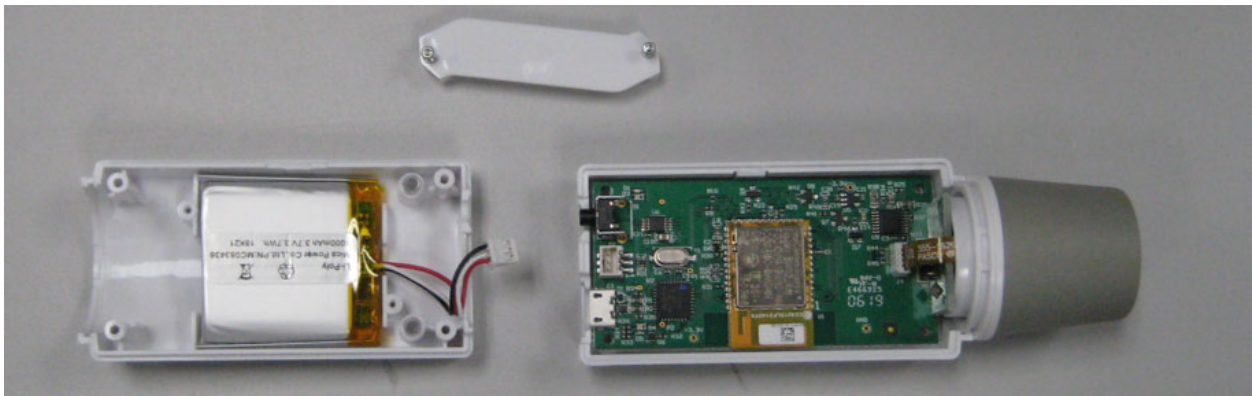


PASCO Form Number	Description	Date		Revision
013-17357	PS-3217 Battery Replacement Instructions	05-05-22	Page 1 of 3	A

Step 2: Rotate the back cover as shown.



Step 3 Remove the battery hold down cover by removing the two screws with the Torx T5 Screwdriver. Unplug the battery connector. See below.



Step 4: Replace the old battery with the replacement battery and reverse the other steps to reassemble the unit.

PASCO Form Number	Description	Date		Revision
013-17357	PS-3217 Battery Replacement Instructions	05-05-22	Page 2 of 3	A

Step 5: Complete the reassembly and dispose of the old battery properly per the instructions.



Battery Replacement and Disposal Instructions (Reference):

Batteries contain chemicals that, if released, may affect the environment and human health. Batteries should be collected separately for recycling, and recycled at a local hazardous material disposal location adhering to your country and local government regulations. To find a battery recycling drop-off location, please contact local waste disposal service or the product representative.



The battery or batteries used in PASCO products are marked with the European Union symbol for waste batteries (above) to indicate the need for separate collection and recycling. For small batteries, the symbol is printed on the packaging.

If you need further assistance, please contact Technical Support at support@pasco.com or through www.pasco.com on chat. To access chat through your browser, please enable all cookies on our website.

PASCO Form Number	Description	Date		Revision
013-17357	PS-3217 Battery Replacement Instructions	05-05-22	Page 3 of 3	A