

PS-3216: Wireless Load Cell Battery Replacement Instructions

Reference: Battery part number 540-113; Li-Poly 1000 mAH

Recommended Equipment: (PS-3299; Battery Replacement Tool Set)



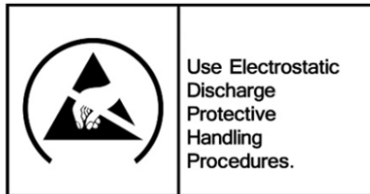
Torx T5 Driver



Replacement Battery



CAUTION: Failure to use proper ESD protection could result in damage to the electronics.



Step 1: Unscrew and remove the Qty=5 screws with a Torx T5 Screwdriver.

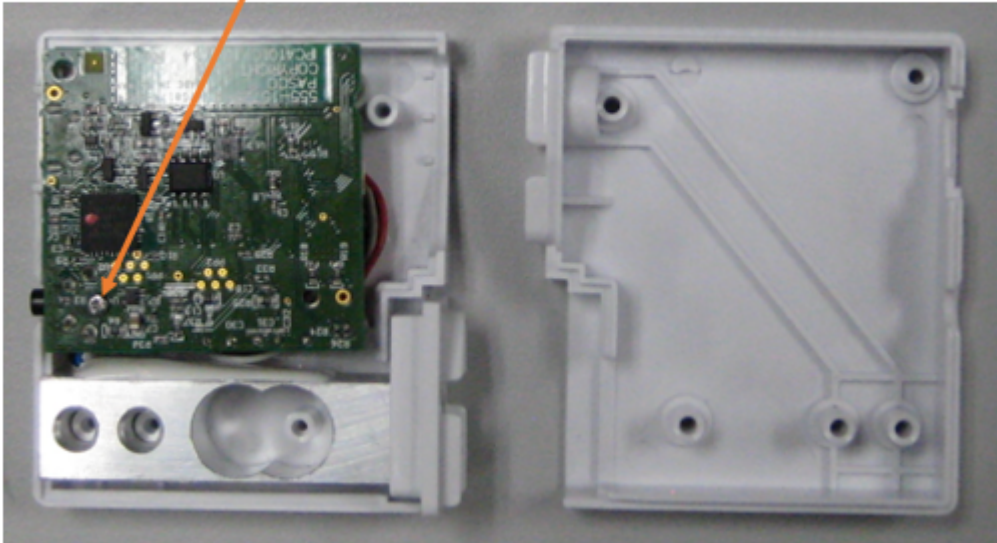
Qty=5 T-5 Screws



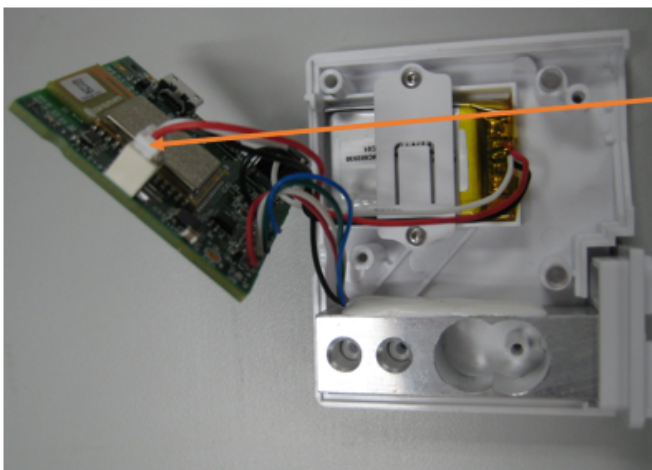
PASCO Form Number	Description	Date		Revision
013-17356	PS-3216 Battery Replacement Instructions	05-05-22	Page 1 of 4	A

Step 2: Separate the two halves as shown.

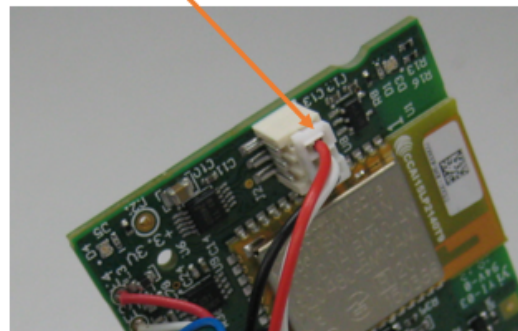
Qty=1 T-5 Screw



Step 3: Remove the Qty=1 screw (see above) with a T5 Screwdriver and lift the PC board away from the battery. Unplug the battery connector from the PC Board.

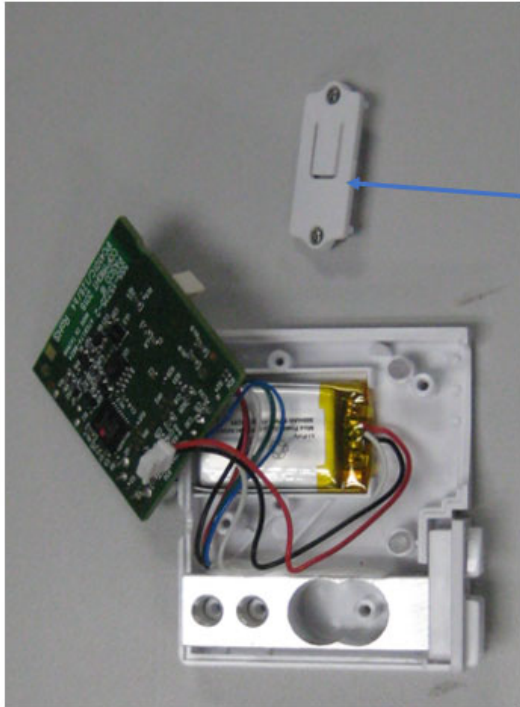


Battery Connector



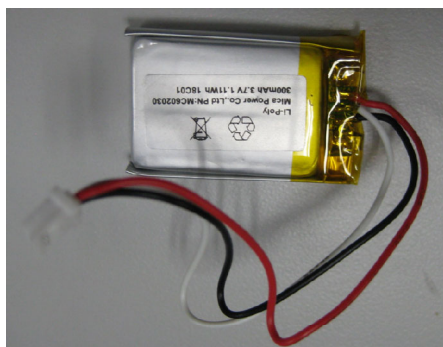
PASCO Form Number	Description	Date		Revision
013-17356	PS-3216 Battery Replacement Instructions	05-05-22	Page 2 of 4	A

Step 4: Remove the battery hold down by removing the Qty=2 screws with a Torx T5 screwdriver and set aside.



Battery hold down
Support. Qty=2
T-5 Screws.

Step 5: Replace the old battery with the replacement battery.



PASCO Form Number	Description	Date		Revision
013-17356	PS-3216 Battery Replacement Instructions	05-05-22	Page 3 of 4	A

Step 6: Reverse the steps above and reassemble the unit. Dispose of the battery properly per the instructions below.



Battery Replacement and Disposal Instructions (Reference):

Batteries contain chemicals that, if released, may affect the environment and human health. Batteries should be collected separately for recycling, and recycled at a local hazardous material disposal location adhering to your country and local government regulations. To find a battery recycling drop-off location, please contact local waste disposal service or the product representative.



The battery or batteries used in PASCO products are marked with the European Union symbol for waste batteries (above) to indicate the need for separate collection and recycling. For small batteries, the symbol is printed on the packaging.

If you need further assistance, please contact Technical Support at support@pasco.com or through www.pasco.com on chat. To access chat through your browser, please enable all cookies on our website.

PASCO Form Number	Description	Date		Revision
013-17356	PS-3216 Battery Replacement Instructions	05-05-22	Page 4 of 4	A