

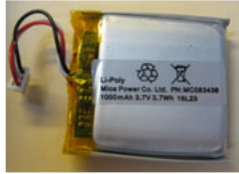
## PS-3208; Wireless CO2 Sensor Battery Replacement Instructions

Reference: Battery part number 540-113; Li-Poly 1000 mAH

Recommended Equipment: (PS-3299; Battery Replacement Tool Set)



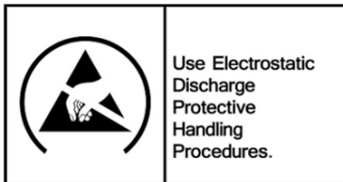
Torx T5 Driver



Replacement Battery



**CAUTION:** Failure to use proper ESD protection could result in damage to the electronics.



**Step 1:** Position the Sensor on a surface as shown. Note the location of the (4) Torx T5 Screws.



Torx T5 Screw,  
4 Places

**Step 2:** Unscrew and remove the 4 Torx Screws with the Torx T5 Screwdriver.

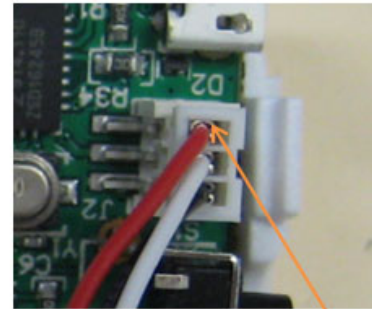
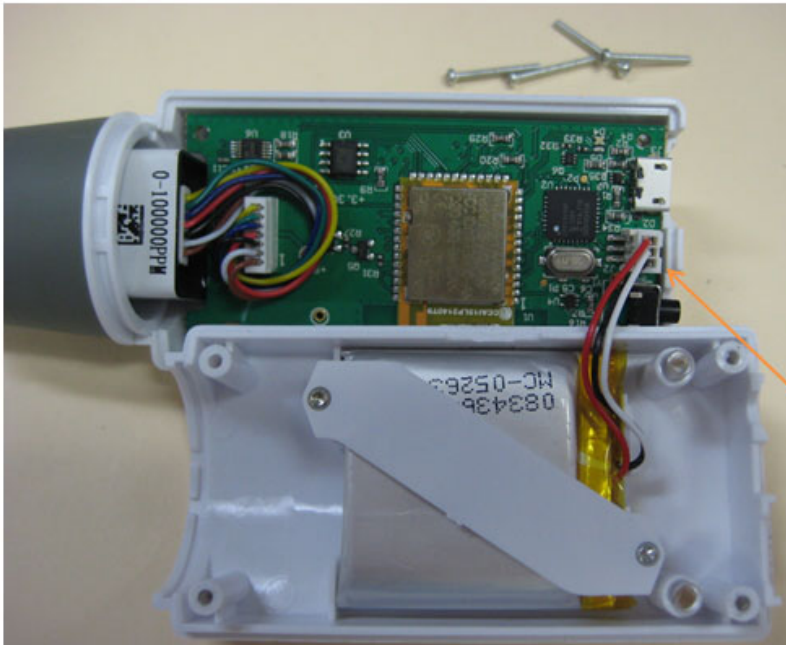


PASCO Form Number	Description	Date		Revision
013-16106	PS-3208 Battery Replacement Instructions	05-05-22	Page 1 of 3	B

**Step 3:** While holding both halves together, flip the product over as shown.



**Step 4:** While holding the bottom with one hand, lift the top off and rotate it downward as shown below.



Note: red wire location

Battery Connector

PASCO Form Number	Description	Date	Page	Revision
013-16106	PS-3208 Battery Replacement Instructions	05-05-22	Page 2 of 3	B

**Step 5:** Remove the battery strap screws (2) with the T5 Screwdriver and remove the battery strap. Unplug the battery from its connector. Remove the battery and add the replacement battery at the location shown (see above picture) and position the wiring similar to the routing shown above. Plug the battery into its mating connector and reverse the steps noted above to complete the reassembly.



Battery strap

## Battery Replacement and Disposal Instructions (Reference):

Batteries contain chemicals that, if released, may affect the environment and human health. Batteries should be collected separately for recycling, and recycled at a local hazardous material disposal location adhering to your country and local government regulations. To find a battery recycling drop-off location, please contact local waste disposal service or the product representative.



The battery or batteries used in PASCO products are marked with the European Union symbol for waste batteries (above) to indicate the need for separate collection and recycling. For small batteries, the symbol is printed on the packaging.

If you need further assistance, please contact Technical Support at [support@pasco.com](mailto:support@pasco.com) or through [www.pasco.com](http://www.pasco.com) on chat. To access chat through your browser, please enable all cookies on our website.

PASCO Form Number	Description	Date		Revision
013-16106	PS-3208 Battery Replacement Instructions	05-05-22	Page 3 of 3	B