

PS-2235/PS-3237; Polarimeter Battery Replacement Instructions

Battery part number: PS-2569; Li-Poly 2500 mAh

Recommended Equipment: (PS-3299; Battery Replacement Tool Set)



Torx T8 Driver



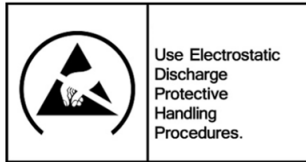
Torx T5 Driver



Replacement Battery



CAUTION: Failure to use proper ESD protection could result in damage to the electronics.



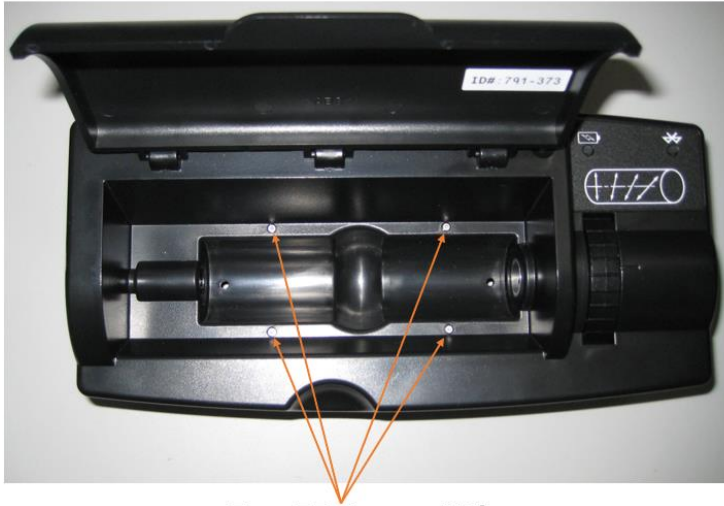
Step 1: Position the Polarimeter looking at the bottom surface as shown. Note the location of (5) Torx T8 Screws. Unscrew the (5) T8 Screws with a Torx T8 Screwdriver.



Torx T8 Screw, 5 Places

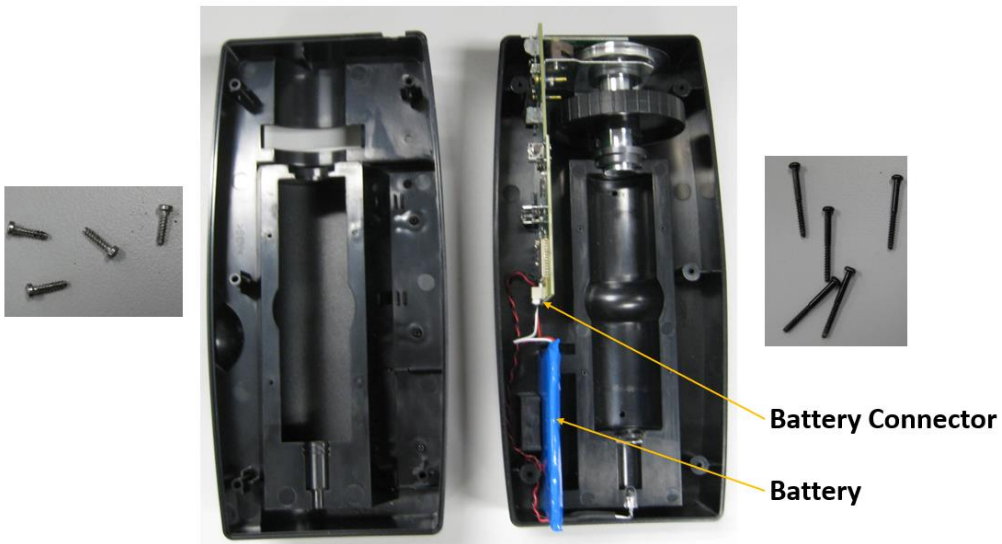
PASCO Form Number	Description	Date		Revision
013-17692	Battery Replacement Instructions	1-03-24	Page 1 of 3	A

Step 2: Flip the unit over looking at the top side as shown with the door open. Note: the (5) T8 Screws may or may not fall out of their openings. Remove the (4) T5 Screws with the Torx T5 Screwdriver.



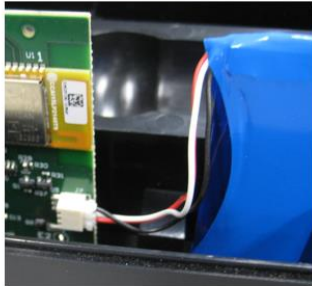
Torx T5 Screw, 4 Places

Step 3: Lift off the Top Cover and locate the two halves of the Polarimeter as shown. Gather all screws and set aside.



PASCO Form Number	Description	Date		Revision
013-17692	Battery Replacement Instructions	1-03-24	Page 2 of 3	A

Step 4: Unplug the battery connector and remove the battery from the slot.



Step 5: Reassembly

- Reverse the assembly steps by first plugging in the replacement battery firmly into the battery connector and locate the battery securely into the battery slot.
- Place the top half of the Polarimeter onto the bottom half.
- Locate and secure the (4) T5 Screws with the Torx T5 Screwdriver.
- Rotate the assembly looking at the back side.
- Locate and secure the (5) T8 Screws with the Torx T8 Screwdriver.

Battery Replacement and Disposal Instructions (Reference):

Batteries contain chemicals that, if released, may affect the environment and human health. Batteries should be collected separately for recycling and recycled at a local hazardous material disposal location adhering to your country and local government regulations. To find a battery recycling drop-off location, please contact local waste disposal service or the product representative.



The battery or batteries used in PASCO products are marked with the European Union symbol for waste batteries that indicate the need for separate collection and recycling. For small batteries, the symbol is printed on the packaging.



PASCO Form Number	Description	Date		Revision
013-17692	Battery Replacement Instructions	1-03-24	Page 3 of 3	A