

## PS-3234; Wireless Spirometer Battery Replacement Instructions

Battery part number PS-3296; Li-Poly 300 mAh

Recommended Equipment: (PS-3299; Battery Replacement Tool Set)



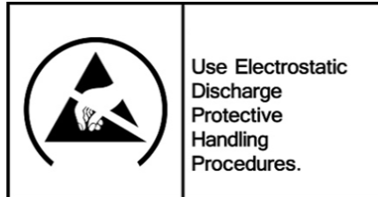
Torx T5 Driver



Replacement Battery



**CAUTION:** Failure to use proper ESD protection could result in damage to the electronics.



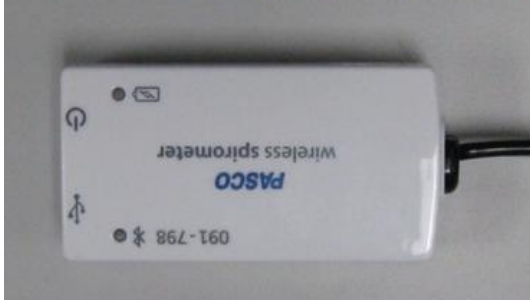
**Step 1:** Position the Sensor on a surface as shown. Unscrew and remove the 4 Torx Screws with the T5 Screwdriver

Qty=4 T5 Screws

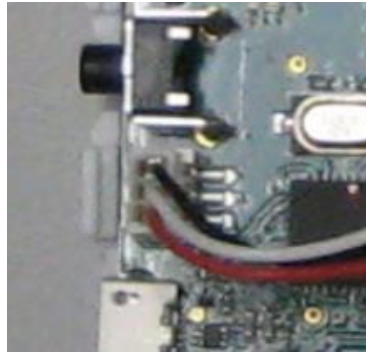


PASCO Form Number	Description	Date		Revision
013-17367	PS-3234 Battery Replacement Instructions	11-29-22	Page 1 of 3	A

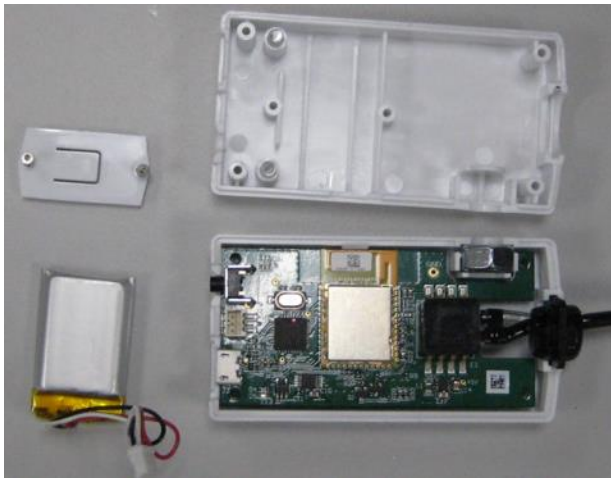
**Step 2:** Flip the unit over and position as shown.



**Step 3:** Separate the two halves as shown.



**Step 4:** Remove the battery hold down cover by removing the 2 screws with the Torx T5 Screwdriver. Unplug the battery and set aside.



PASCO Form Number	Description	Date		Revision
013-17367	PS-3234 Battery Replacement Instructions	11-29-22	Page 2 of 3	A

**Step 5:** Replace the old battery with the replacement battery. Plug in the battery and reverse all steps to reassemble the unit. Dispose of the old battery properly per the instructions.



## Battery Replacement and Disposal Instructions (Reference):

Batteries contain chemicals that, if released, may affect the environment and human health. Batteries should be collected separately for recycling, and recycled at a local hazardous material disposal location adhering to your country and local government regulations. To find a battery recycling drop-off location, please contact local waste disposal service or the product representative.



The battery or batteries used in PASCO products are marked with the European Union symbol for waste batteries (above) to indicate the need for separate collection and recycling. For small batteries, the symbol is printed on the packaging.

If you need further assistance, please contact Technical Support at [support@pasco.com](mailto:support@pasco.com) or through [www.pasco.com](http://www.pasco.com) on chat. To access chat through your browser, please enable all cookies on our website.

PASCO Form Number	Description	Date		Revision
013-17367	PS-3234 Battery Replacement Instructions	11-29-22	Page 3 of 3	A